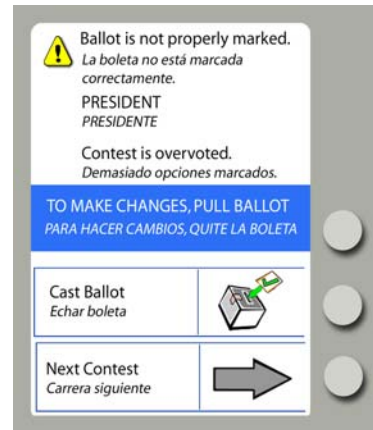


How to Use the eScan for Paper Ballots (continued)

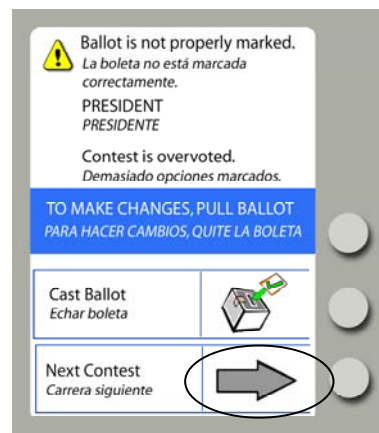
4. Respond to any Voter Instruction messages.
 - ▶ If the ballot is *properly marked*, eScan accepts the ballot and displays the waving American flag to indicate that the ballot has been recorded.



5. Respond to any Voter Instruction messages (continued).
 - ▶ If the ballot has *improperly marked*, contests, information screens appears for each contest that requires attention.



6. To see information about the next contest not properly marked, you may select **Next Contest**.



TO MAKE CORRECTIONS

- ▶ **Overvotes:** too many options marked
Pull the ballot and ask the poll worker for a new one. The old one will be destroyed.
- ▶ **Undervotes:** too few or no marks on a contest
Pull the ballot and mark the undervoted contests, if desired. Then rescan.
- ▶ **Blank ballot:** no options are marked on the entire ballot
Pull the ballot and mark any contests desired. Then rescan.

7. If you want to cast ballot as-is, you will have one of two options shown on the screen.

- ▶ You may have the option to select **Cast Ballot** to cast the ballot as-is, without poll worker assistance. **Selecting Cast Ballot drops the ballot into the ballot box and records the vote as-is!**

or

- ▶ You may have to contact a poll worker for assistance to cast the ballot as-is.

