

**An Overview of
Denton County's
Voting System**

Welcome to the Hart Voting System!

What will you see at the polling place?

The eScan for paper ballots & the eSlate for accessibility.



eScan



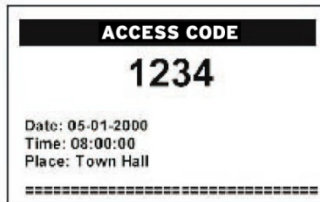
eSlate

What's Different About Voting?

- When you arrive to vote, present your voter registration card and/or government issued photo identification and a poll worker will sign you in the same way as always.
- You will see new voting booths – booths to vote by paper ballot using the eScan will be available, as well as, eSlate booths to vote electronically.
- You may choose either option.

What's Different About Voting?

If you vote on the eSlate, the election judge will give you a four-digit "Access Code" enabling you to vote on the eSlate.

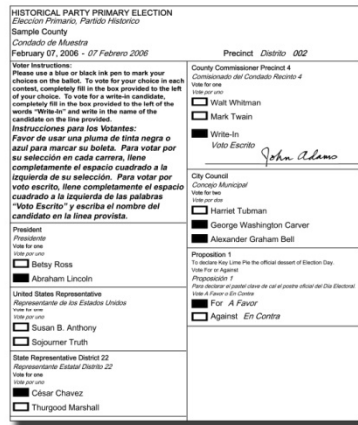


Proceed to the eSlate Voting booth and follow the simple "How to Vote" instructions.



eSlate Voting Booth

If you vote on the eScan, the election judge will hand you a paper ballot.



Proceed to the private Voting booth and complete your ballot. Walk your ballot to the eScan and insert your ballot into the Ballot Feed Slot.



eScan



Detailed instructions for voting on the eSlate follow.

The Buttons



Turn the **SELECT** wheel to highlight your choices.



Press **ENTER** to vote for a selected choice.



Use the **CAST BALLOT** button to cast your ballot.



Use **PREV** to go to the previous page.

Use **NEXT** to go to the next page.



Press **HELP** to get help.

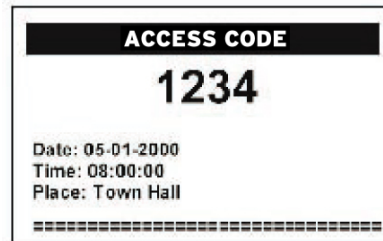
Select Your Language

1. Turn the **SELECT** wheel until the language you want is highlighted in red.



2. Press **ENTER** to make your selection.

Enter Your Access Code



Enter Your Access Code

1. Turn SELECT wheel to highlight a digit.
2. Press ENTER to choose that digit.

Access Code

1	2	3	
4	5	6	
7	8	9	
0	Clear Last		

Press HELP for instructions. **Battery**

1. Turn the **SELECT** wheel to highlight the first number of your Access Code.
2. Press **ENTER** to choose that number.
3. Repeat for all numbers of your Access Code.
4. When the last digit in your code has been entered, you will see the first page of your ballot.

Make Ballot Choices

Council Member	
<input type="checkbox"/>	Abraham Lincoln
<input type="checkbox"/>	Alexander Hamilton

Council Member	
<input checked="" type="checkbox"/>	Abraham Lincoln
<input type="checkbox"/>	Alexander Hamilton

1. Turn the **SELECT** wheel until your choice is highlighted in blue.
2. Press **ENTER**. The box to the left of your choice will turn red to show your vote.
3. The blue highlight bar will move to the next contest title.
4. Continue through the ballot until you have voted all the contests you wish to vote.
5. You may use the **PREV** or **NEXT** buttons at any time to move through the ballot.

Review Your Ballot



Ballot Summary Page

To change a vote, highlight the contest to change and press ENTER.

Contest	Selected
PRESIDENT/VICE PRESIDENT	Harry Browne/Art
UNITED STATES SENATOR	No selections
GOVERNOR	Harriett Tubman
ATTORNEY GENERAL	No selections
MAYOR	No selections
COUNTY JUDGE	No selections



Press PREV for previous page.

To complete your voting and cast your ballot, press CAST BALLOT.

- ✓ After you have voted all the pages of the ballot, a Ballot Summary page appears, allowing you to review your selections.
- ✓ To change your vote, turn the **SELECT** wheel until the contest you want to change is highlighted, then press **ENTER**. You will return to that contest.
- ✓ You may use the **PREV** and **NEXT** buttons to review your ballot.

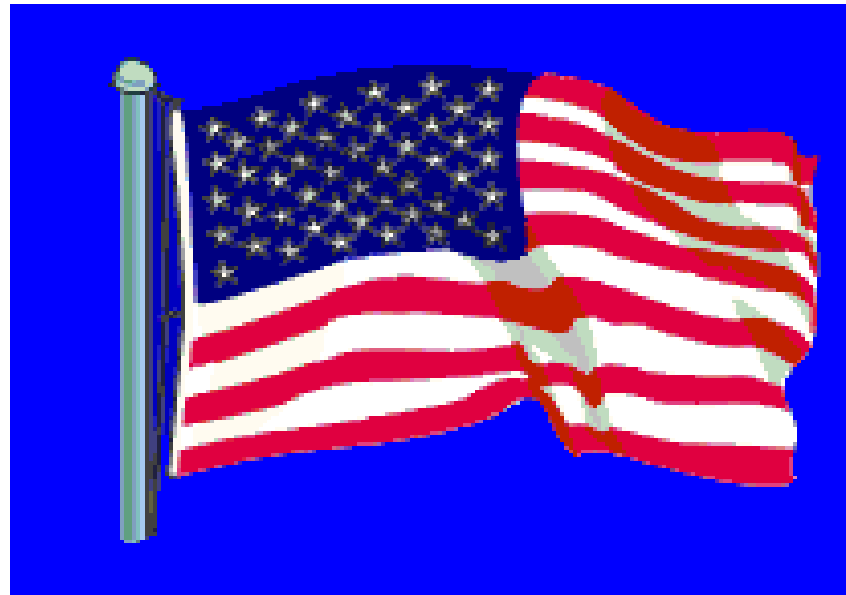
Cast Your Ballot

When you have completely finished voting and reviewing your Ballot Summary page, press the **CAST BALLOT** button. **WARNING:** Do NOT press CAST BALLOT unless you are totally finished with the voting process.



Cast Your Ballot

Your vote has been recorded when you see the waving American Flag.



The eSlate Offers Many Accessible Options to Cast Your Ballot



Vote using Jelly Switches.



Vote using a Sip-and Puff Device.

Listen to the ballot using the headphones.



Detailed instructions for voting on the eScan follow.

eScan Paper Ballots

- To mark your paper ballot correctly, use a BLUE or BLACK pen to completely fill in the box beside your choice, as shown on the example ballot.
- To vote for a write-in candidate, completely fill in the box beside the words “write-in” and write the name of your choice on the blank line provided.
- Do not fill in more choices than allowed.
- If you make a mistake, ask a poll worker for a new ballot.

County Commissioner Precinct 4
Comisionado del Condado Recinto 4
Vote for one
Vote por uno

Walt Whitman
 Mark Twain
 Write-In
Voto Escrito
John Adams

City Council
Concejo Municipal
Vote for two
Vote por dos

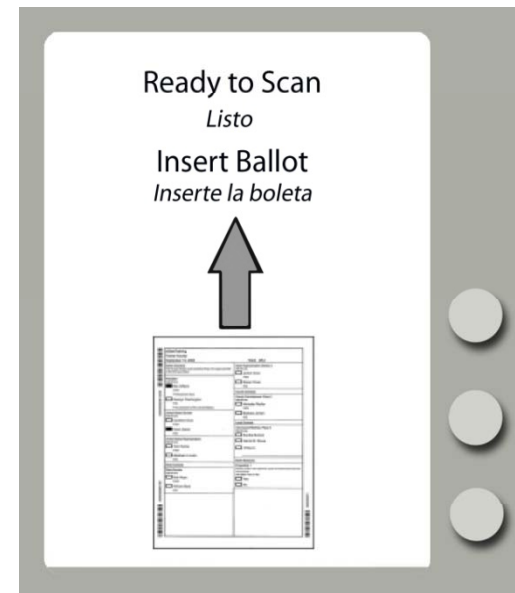
Harriet Tubman
 George Washington Carver
 Alexander Graham Bell

Proposition 1
To declare Key Lime Pie the official dessert of Election Day.
Vote For or Against
Proposición 1
Para declarar el pastel clave de cal el postre oficial del Día Electoral.
Vote A Favor o En Contra

For *A Favor*
 Against *En Contra*

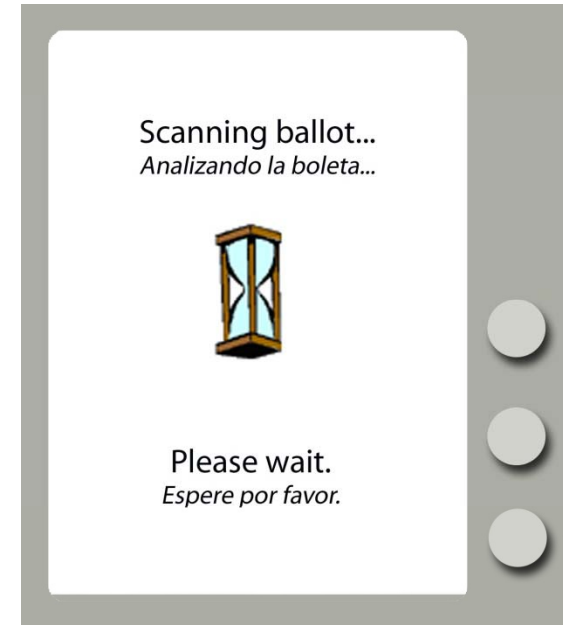
eScan Paper Ballots

- When finished marking your ballot, walk your ballot to the eScan. Insert your ballot into the Ballot Feed Slot.
- The eScan displays Ready to Scan when the machine is available for the next ballot.



eScan Paper Ballots

- Wait while the Scanning Ballot message is displayed...

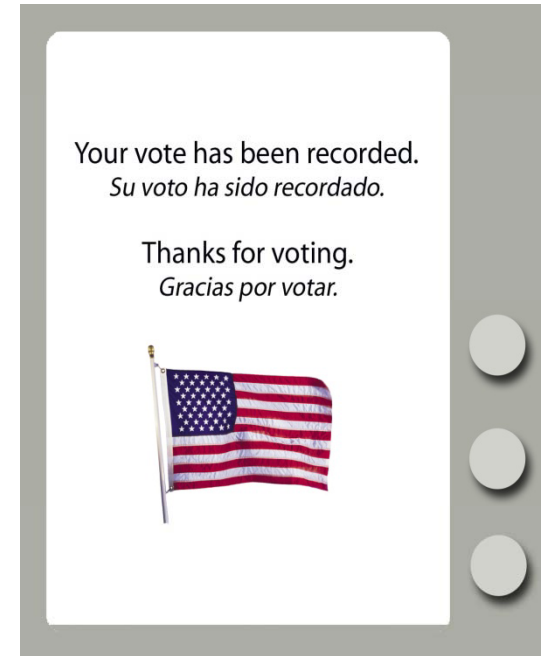


- Respond to Voter Instruction messages that appear on the eScan Screens – watch for information icons like this one.



eScan Paper Ballots

- If the ballot is properly marked, the eScan accepts the ballot and displays a waving American flag to indicate that the ballot has been recorded.

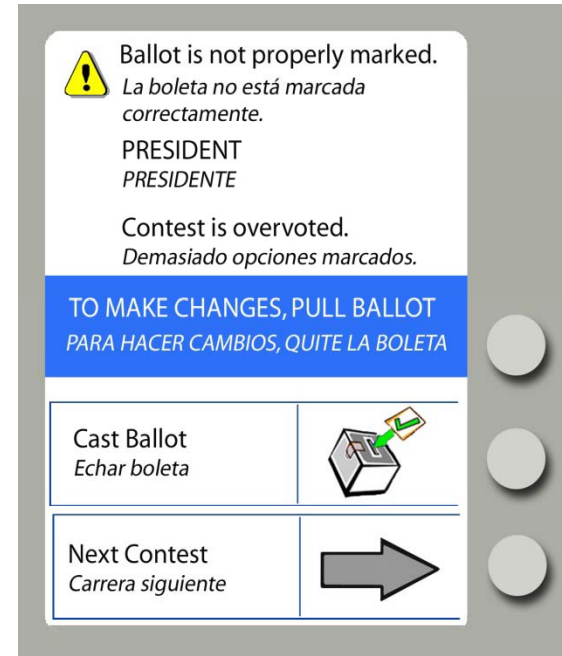


- If a ballot is not properly marked, the eScan will display Voter Instruction messages on screen.



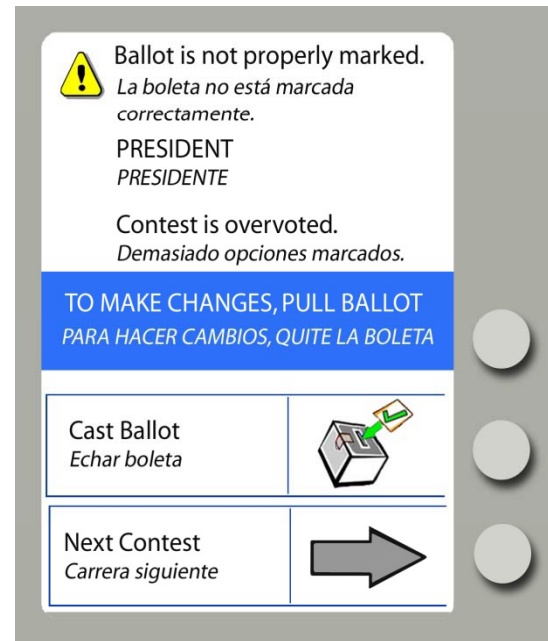
eScan Paper Ballots

- In this example, the Presidential Contest on the ballot is over-voted, which means marks were detected for two candidates.
 - A voter may decide to purposefully over-vote and cast the ballot “as-is” by pressing the button next to **Cast Ballot**. Selecting **Cast Ballot** drops the ballot into the ballot box and records the vote as-is!
 - Or a voter may correct the ballot, by pulling the ballot from the eScan and asking the poll worker for a new one. The old ballot will be destroyed and the voter may ask a poll worker for a new ballot up to three times.



eScan Paper Ballots

- To review other contests that may not be properly marked, select the button beside **Next Contest**.
- Continue to review and respond to Voter Instruction messages as they appear on screen.
- You know your done when the eScan accepts the ballot and displays a waving American flag to indicate that the ballot has been recorded.



Ballot Now

Absentee By-mail System

- Use a **BLUE** or **BLACK** pen to completely fill in the box beside your choice, as shown here.
- Do not fill in more choices than allowed.
- If you make a mistake, you may correct it by crossing out the incorrect choice with an X and marking your true choice.
- You must sign and date the voter's affidavit.
- Make sure you mail your ballot in the envelope provided so it will be received no later than Election Day.

County Commissioner Precinct 4
Comisionado del Condado Recinto 4
 Vote for one
Vote por uno

Walt Whitman

Mark Twain

Write-In
Voto Escrito

John Adams

City Council
Concejo Municipal
 Vote for two
Vote por dos

Harriet Tubman

George Washington Carver

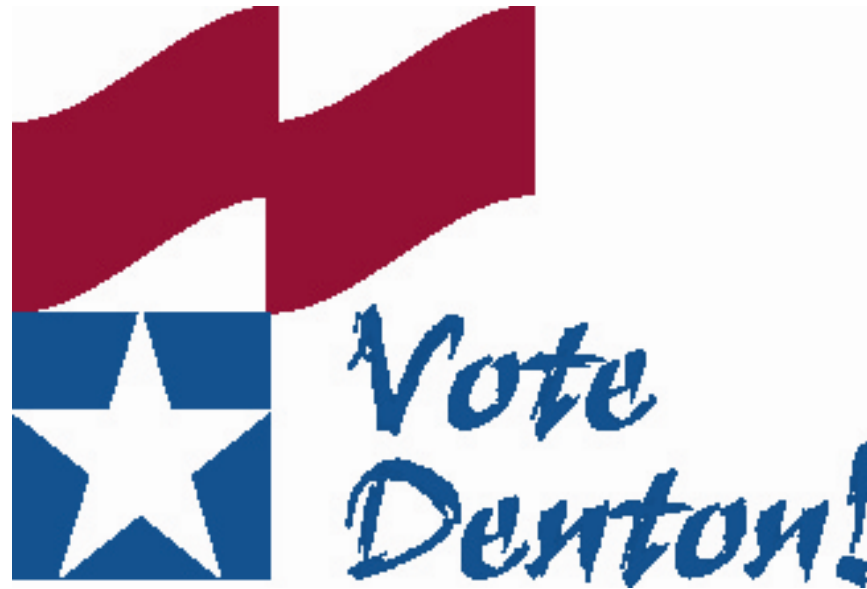
Alexander Graham Bell

Proposition 1
 To declare Key Lime Pie the official dessert of Election Day.
 Vote For or Against
Proposición 1
Para declarar el pastel clave de cal el postre oficial del Día Electoral.
 Vote A Favor o En Contra

For *A Favor*

Against *En Contra*

Make Sure to Get Out and ...



Upcoming Elections

February 19- February 29, 2008 – Early Voting for Primary Election.

March 4, 2008 – Primary Election Day.